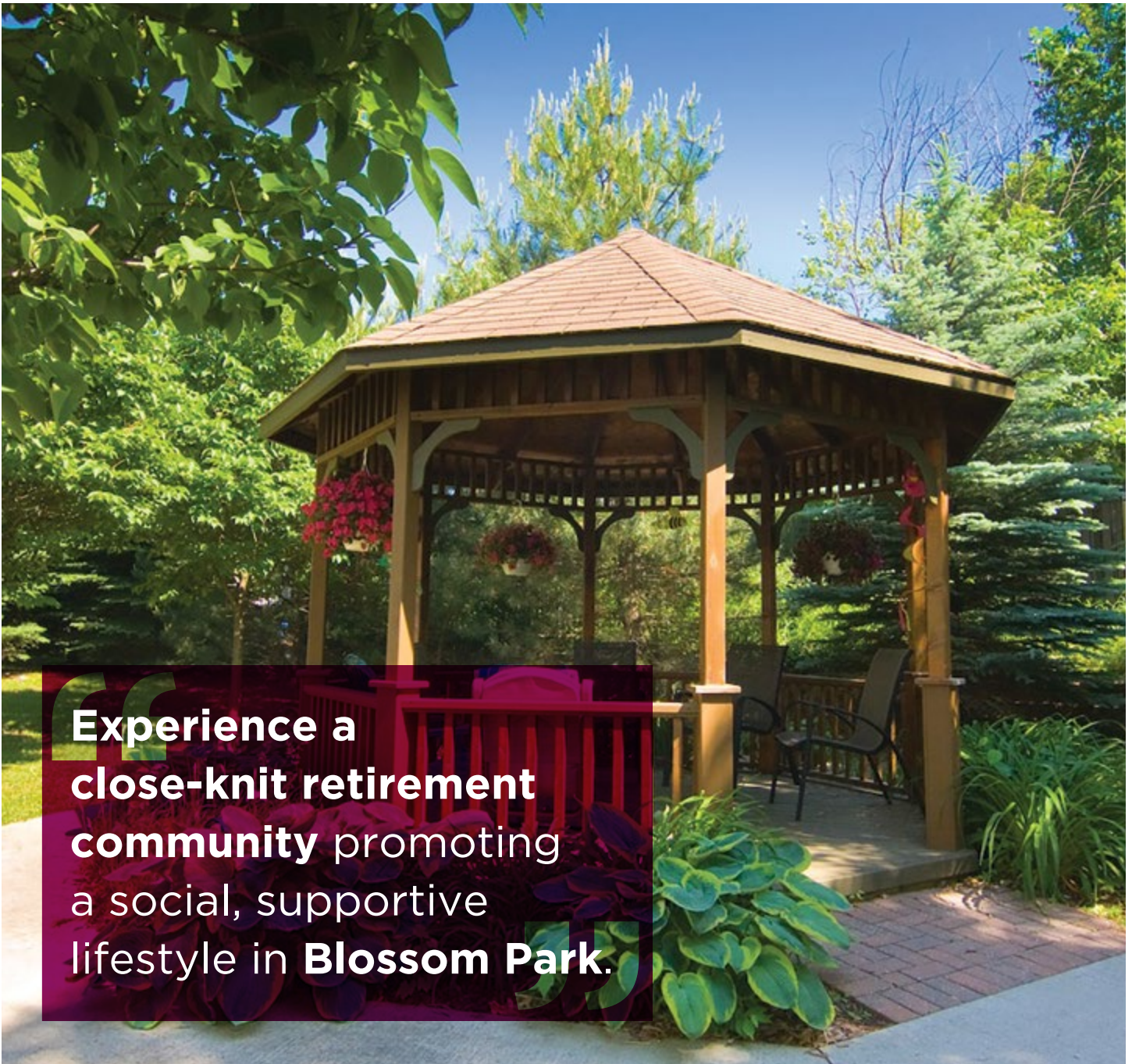




**CHARTwell**  
BRIDLEWOOD  
retirement residence



making people's lives **BETTER**



Experience a  
**close-knit retirement  
community** promoting  
a social, supportive  
lifestyle in **Blossom Park.**

## PART OF OUR LOCAL COMMUNITY SINCE 2001

Chartwell Bridlewood offers an independent supportive living lifestyle ideal for active seniors looking for a flexible, worry-free retirement. Our charming residence is in the Blossom Park neighbourhood of Gloucester, near South Keys Shopping Centre.

We enjoy a lovely location in a quiet, suburban neighbourhood featuring mature trees, green space and family homes. It's the perfect place for

a quiet stroll in nature, yet also boasts a variety of convenient local amenities nearby. Great shopping opportunities at SmartCentres Ottawa South, banks, restaurants, coffee shops, movie theatres and multiple places of worship make running errands or meeting up with friends both easy and enjoyable. Public transit options are available just outside our doorstep.

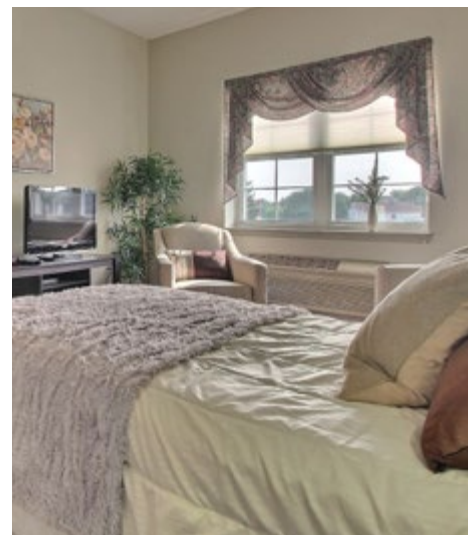


## OUR UNIQUE LIFESTYLE

Chartwell Bridlewood provides the perfect setting for someone looking for an active and independent lifestyle, with support options available to make life worry-free. Our pet-friendly retirement community features a cozy interior, spacious studio and one-bedroom suites, and lush outdoor space, giving us the atmosphere of a true home. Walking paths, exercise programming and a crafts room add to the ambiance.

Here, you'll also benefit from worry-free services like delicious and nutritious meals, housekeeping and the availability of social and leisure experiences. Our dedicated, long-standing staff are here to ensure your comfort so you can focus on what makes you happiest in life.

**Explore our Living at Chartwell brochure to learn more about dining, lifestyle activities and personalized care services.**



# FACTS & FEATURES



## IN THE NEIGHBOURHOOD

- Grocery stores
- Pharmacies
- Shopping
- Restaurants
- Medical clinics
- Banks
- Transit
- Coffee shops
- Parks

## ACTIVITIES

- Educational activities
- Social and recreational programs
- Live entertainment
- Exercise
- Day trips\*
- Cultural activities
- Piano
- Yoga

## DINING SERVICES

- Diversified menu
- À la carte menu
- Family dinner
- Meals for guests\*
- Freshly-prepared snacks
- Open seating dining







## CARE SERVICES

- Medication supervision/administration\*
- On-site Nurse
- Oxygen service\*
- Assistance with activities of daily living\*
- Physiotherapy\*
- Pharmacy
- Visiting Physician\*
- Vitals monitored\*
- Care Assist Program

## AMENITIES

- Dining room
- Bistro/cafe
- Country kitchen
- Activity room
- Fitness room
- Movie theatre
- Multi-functional room
- TV room



-  Grocery store
-  Shopping
-  Restaurant
-  Coffee shop
-  Bank
-  Medical clinic
-  Library
-  Place of worship

### CHARTWELL BRIDLEWOOD

3998 Bridle Path Drive, Gloucester, ON K1T 4H4 • 343-882-4762